

CORE B

PLEASE NOTE,
ALL INFORMATION PROVIDED IN THIS
BROCHURE IS PRELIMINARY ONLY.



WESTERN PLAZA

A COLLECTION OF HIGH SPECIFICATION
ONE, TWO AND THREE BEDROOM APARTMENTS



VILLAGE LIFE IN THE CITY



WESTERN
PLAZA

A new home in the
heart of a **thriving**
community

WELCOME TO **WESTERN PLAZA**,
A COLLECTION OF STYLISH 1, 2 AND
3-BEDROOM HOMES, ADJACENT TO
A BEAUTIFUL NEIGHBOURHOOD
SQUARE, AT THE POPULAR
GREENWICH MILLENNIUM VILLAGE.

ENJOY EASY ACCESS TO LIFE'S ESSENTIALS IN THE VILLAGE AND TRATHEN SQUARES

GREENWICH MILLENNIUM VILLAGE HAS BEEN CAREFULLY PLANNED TO PROVIDE EVERYTHING A COMMUNITY NEEDS TO THRIVE AND GROW.

That means convenient access to those day-to-day essentials, from shops, a school and a health centre to play areas and leisure facilities.

At the heart of the community is the Village Square; home to a convenience store, dry cleaners, pharmacy and hairdressing salon. There's also an Ayurvedic health and beauty spa with a vegetarian café. The new development of Trathen Square offers residents easy access to a Co-op, barbers and a pharmacy with even more commercial spaces planned in the future.

Greenwich Millennium Village residents get round-the-clock support from our Concierge Service. On hand 24 hours a day, 365 days a year, the concierge team take in parcels, hold keys, provide advice or help in an emergency and more.



SITUATED IN THE VILLAGE SQUARE IS CAFÉ PURA WHERE YOU CAN RECHARGE WITH REFRESHING TEA AND COFFEE, OR A LUNCH MADE WITH NOURISHING, ALL-NATURAL INGREDIENTS.



INDULGE AT AYURVEDA PURA'S HEALTH SPA & BEAUTY CENTRE, A LUXURIOUS DAY SPA OFFERING A WIDE RANGE OF BEAUTY, AYURVEDIC AND OTHER HOLISTIC TREATMENTS.



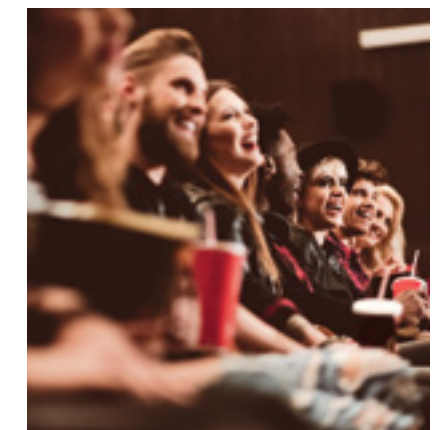
ON-SITE AMENITIES

- CAFÉ
- PHARMACIES
- HEALTH & BEAUTY SPA
- HAIRDRESSING SALON & BARBERS
- CO-OP & CONVENIENCE STORE
- DRY CLEANERS

THE MILLENNIUM LEISURE PARK IS CLOSE AT HAND

A GREAT DESTINATION FOR CINEMA AND DINING.

Adjacent to Greenwich Millennium Village is the Millennium Leisure Park, which features a multiplex cinema with IMAX and a choice of restaurants, as well as an IKEA and DIY store.



MOVE CLOSER TO NATURE

HOME TO 50 ACRES OF PARKLAND ON THE GREENWICH PENINSULA, INCLUDING CENTRAL PARK, GREENWICH MILLENNIUM VILLAGE BOASTS MILES OF CYCLE PATHS, SO YOU CAN LEAVE THE CAR AT HOME.

Situated less than a mile from the O2 and North Greenwich station, enjoy all the amenities of a village with superb connectivity to the city – Canary Wharf is just one stop away.*

This thriving community is home to landscaped courtyards, leafy avenues and a variety of design styles to create a distinctive village feel.

On your doorstep, you'll find the Ecology Park, owned by the Land Trust Charity and managed by The Conservation Volunteers (TCV). A focal point for the community, this four-acre freshwater wetland site features two lakes and a beach, plus areas of marsh, meadow and woodland. There's also a dipping shed plus a network of wooden boardwalks and bird hides to explore, as well as a full calendar of seasonal community events.

The park's picture-perfect lakes are linked to ponds, reedbeds and islets to draw estuarine birds and migrating species, while a 'green corridor' provides an ecological link from the riverbank to the far side of the village.

Children will love the extensive eco play area, where they can get active on a log walk, crossbeam balance trail, climbing tower, mast activity net, living willow tunnel and timber team swing.



*Source: Google Maps

4
ACRES OF
ECOLOGY PARK
TO EXPLORE

OVER
16
SPECIES OF
DRAGONFLY AND
DAMSELFLY

100s
OF SCHOOL CHILDREN
GAINING HANDS ON
EXPERIENCE

A CALENDAR OF
SEASONAL
COMMUNITY
EVENTS

MILES
OF CYCLE PATHS

OVER
20
SPECIES OF
BUTTERFLY



CHILDREN'S
ECO
PLAY AREA



85
SPECIES OF
BIRDS IN THE
ON-SITE
ECOLOGY PARK



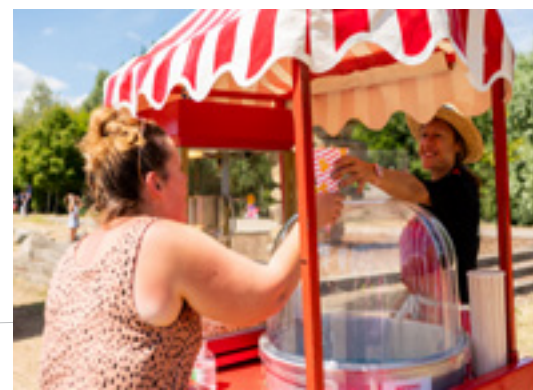


COMMUNITY AT THE HEART

GREENWICH MILLENNIUM VILLAGE IS MORE THAN A PLACE TO SET UP HOME. IT'S A THRIVING, GROWING COMMUNITY WHERE PEOPLE PUT DOWN ROOTS, SOCIALISE, RAISE THEIR FAMILIES AND CELEBRATE MILESTONES.

With a calendar of seasonal events ranging from the popular Summer Fete held in Southern Park, craft workshops to Chinese New Year and Holi celebrations, there are plenty of opportunities to come together, get to know your neighbours and enjoy the very best that village life in this community has to offer.

This variety of events, along with local clubs are arranged by both residents and by the Greenwich Millennium Village Residents Association, who exist to represent local residents.



AN AREA WITH TOP-CLASS EDUCATION



FROM CHILDCARE AT THREE MONTHS OLD TO THE GRANDEUR AND HISTORY OF JOHN ROAN AND THE UNIVERSITY OF GREENWICH. AT GREENWICH MILLENNIUM VILLAGE YOU'RE WELL LOCATED FOR EDUCATION.

0-4
YEARS

MILLENNIUM MINIS

Offers childcare provision for children aged between three months and four years old. With a focus on creating a home-from-home atmosphere, the team also promotes outdoor learning in the village's lovely open spaces.

3-11
YEARS

MILLENNIUM PRIMARY*

Rated 'Outstanding' by Ofsted in 2015, Millennium Primary School caters for children between three and eleven. It's a welcoming, multi-cultural school with a warm and friendly ethos and a fantastic reputation for achieving excellent results.

* Please note admission to Millennium Primary School is subject to the admission criteria set out by the Royal Borough of Greenwich.

11-18
YEARS

JOHN ROAN

At secondary level, the nearest school is the John Roan, a ten-minute drive from the Village. Dating back to 1677 and one of the oldest state schools in the country, it takes students through to sixth form level. Other options include the independent Blackheath High School and St Ursula's Convent.

18+
HIGHER
EDUCATION

THE UNIVERSITY OF GREENWICH

The University of Greenwich offers a wide range of academic and vocational courses at undergraduate and postgraduate levels, from humanities and engineering to media and the creative arts. Also within easy reach are London's many other world-class universities and colleges, from UCL to the LSE.

PERFECTLY POSITIONED FOR LINKS TO LONDON & BEYOND

AT GREENWICH MILLENNIUM VILLAGE, YOU'RE ALWAYS WITHIN REACH OF LONDON'S THRIVING CENTRE, BUT YOU CAN ENJOY THE FREEDOM TO RELAX AND ENJOY LIFE AT YOUR OWN PACE, AWAY FROM THE HUSTLE AND BUSTLE.

From the ancient alleyways of the East End to the tree-lined towpaths along the Regents Canal and the quirky, multi-cultural vibe of Camden Market, you can soak up the city with ease. Visit Soho, Chinatown or Covent Garden, packed with a myriad collection of restaurants, cafés and bars.

Closer to home in Greenwich, there are summer concerts and plays at the park and Old Royal Naval College, as well as riverside arts, comedy festivals, music and shows at Greenwich Theatre and Greenwich Playhouse. After dark, choose from cinemas, contemporary restaurants, classic pubs and intimate bars.

North Greenwich station is less than 1 mile away, with fast connections to the city, including Canary Wharf, just 1 minute away* by tube. Stratford is accessible in 8 minutes* for rail services and Westfield shopping centre.

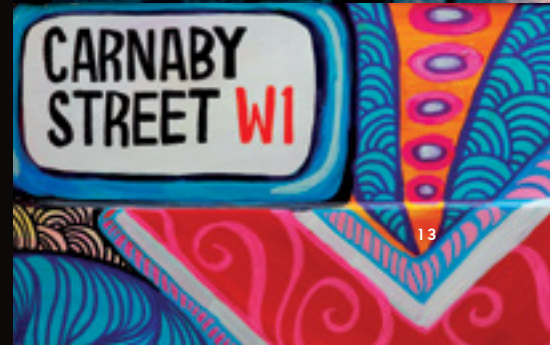
If you're keen to enjoy the water, why not cross the Thames on the Emirates Air Line cable car from the Greenwich Peninsula to the Royal Docks? With a journey of around 10 minutes*, it affords fantastic views of the River Thames. Alternatively, Thames Clipper services also run regularly from North Greenwich Pier to a range of destinations along the river, including Canary Wharf (20 minutes)*, London Bridge (35 minutes)* and Waterloo (55 minutes)*.

Greenwich Millennium Village is less than two miles* from the A2, linking you to the M20 and the M25, while London City Airport is just under 15 minutes away via the Jubilee Line and DLR from North Greenwich station.

Or leave the car at home - there are excellent local bus services, with stops conveniently located at the Village Square.



*All travel times taken from Google Maps and TFL.





WESTERN PLAZA

AT THE HEART OF A THRIVING COMMUNITY

- WESTERN PLAZA
- EXISTING DEVELOPMENT
- FUTURE DEVELOPMENT

1. FOUR-ACRE ECOLOGY PARK
2. SWAN LAKE
3. THE VILLAGE SQUARE INCLUDING AMENITIES
4. ECO PLAY PARK
5. SOUTHERN PARK
6. PRIMARY SCHOOL & HEALTH CENTRE
7. FUTURE DEVELOPMENT
8. ENERGY CENTRE
9. TRATHEN SQUARE
10. LATIMER SQUARE
11. NORTHERN SQUARE
12. NURSERY
13. COMMUNITY CENTRE AND CONCIERGE OFFICE

Please note the master plan is not to scale and is intended for illustrative purposes only. All landscaping shown is indicative and layouts are given as a guide only. Road and paving surface colours are indicative only.

A SPECIAL PLACE TO CALL HOME

WESTERN PLAZA OCCUPIES A BEAUTIFUL PART OF GREENWICH MILLENNIUM VILLAGE, SITTING AT THE VERY HEART OF THIS THRIVING COMMUNITY.

Whilst boasting public space on the doorstep, these homes are also just a short walk from the picturesque Southern Park, home to events throughout the year, as well as benefiting from easy access to the Ecology Park and scenic walks along the River Thames.

A PLACE DESIGNED FOR EVERYONE

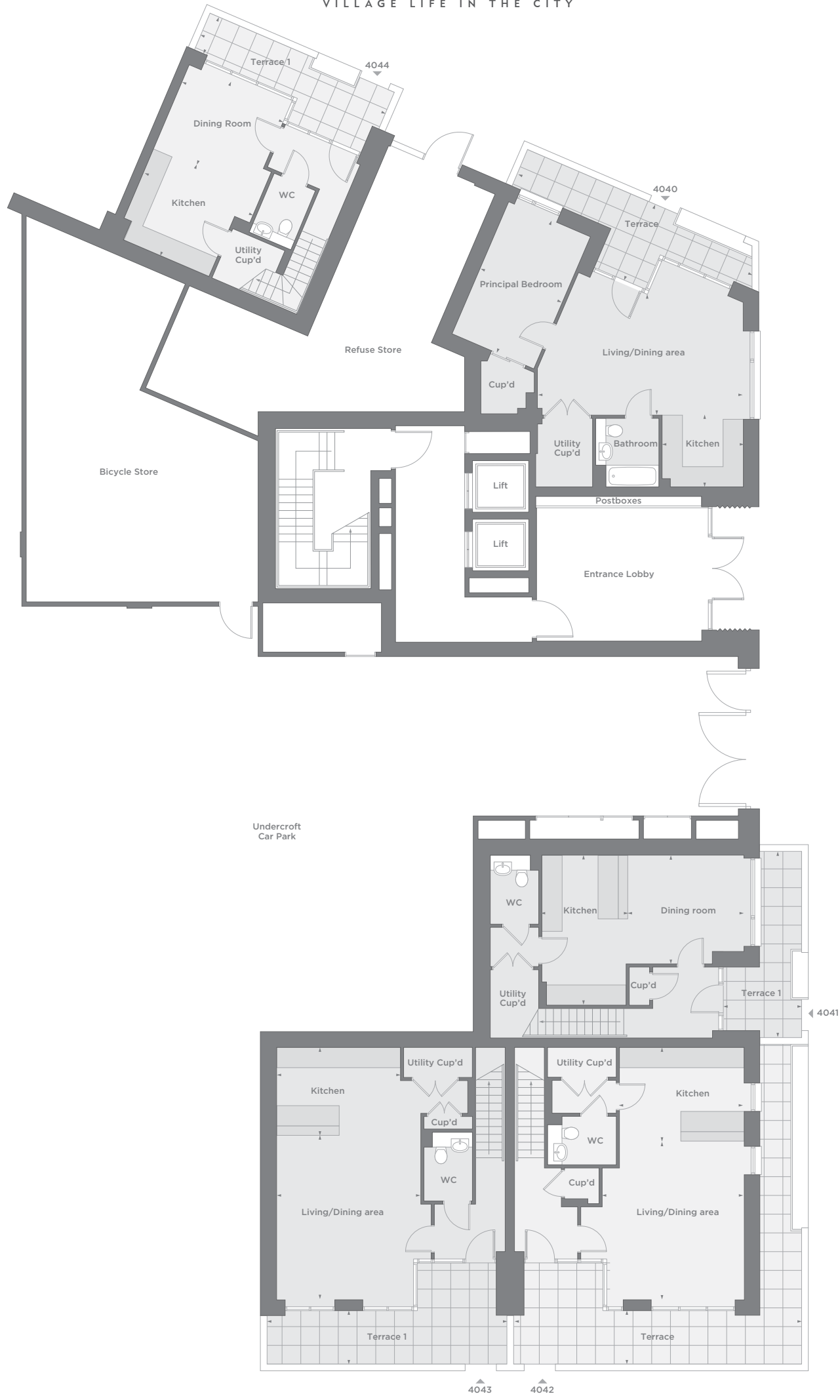
THE THOUGHTFULLY DESIGNED SPACE ADJACENT TO WESTERN PLAZA IS HOME TO SEATING AREAS, PATHWAYS, AND A TURFED SQUARE, SO IT'S IDEAL FOR WATCHING THE WORLD GO BY WHILST ENJOYING YOUR MORNING COFFEE OR FOR WINDING DOWN INTO THE EVENING AS THE SUN SETS.

Whether you're planning a get together with family for a picnic, a catch up with friends over a coffee or a moment of peace with a good book, this versatile space is perfect for all occasions.

A TOUCH OF TRANQUILLITY

THE CONSIDERED DESIGN OF WESTERN PLAZA MEANS THAT, AT ITS HEART, THERE IS A BEAUTIFUL PODIUM GARDEN, EXCLUSIVELY FOR USE BY RESIDENTS.

An oasis of calm, this light filled, landscaped space has been carefully planted with trees and shrubs, making it the ideal spot for a moment of calm.



4040 1 BEDROOM APARTMENT

KITCHEN
2.60M X 2.30M

LIVING / DINING AREA
6.59M X 3.86M

PRINCIPAL BEDROOM
4.60M X 2.82M

TOTAL INTERNAL AREA
58.35SQM / 627.55SQFT

TERRACE
8.21M X 1.27M

4041 3 BEDROOM MAISONETTE (LOWER)

KITCHEN
4.79M X 2.75M

DINING AREA
3.72M X 3.48M

TERRACE 1
5.96M X 1.35M

CONTINUED ON P25

4042 3 BEDROOM MAISONETTE (LOWER)

KITCHEN
3.99M X 3.00M

LIVING / DINING AREA
5.06M X 4.54M

TERRACE
9.24M X 1.72M

CONTINUED ON P25

4043 3 BEDROOM MAISONETTE (LOWER)

KITCHEN
3.99M X 2.80M

LIVING / DINING AREA
5.26M X 4.97M

TERRACE 1
7.67M X 1.72M

CONTINUED ON P25

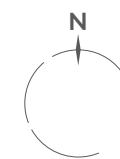
4044 3 BEDROOM MAISONETTE (LOWER)

KITCHEN
3.75M X 3.05M

DINING ROOM
3.47M X 2.93M

TERRACE 1
6.42M X 1.27M

CONTINUED ON P25



KEY:

W - Wardrobe

Cup'd - Cupboard

Utility Cup'd - Utility Cupboard

All room sizes are approximate showing maximum dimensions which have been taken into the kitchen units. Dimensions stated are within a tolerance of +/- 5%. Total internal area measurements exclude outdoor areas. They are to finished measurements and are not intended for carpet sizes or items of furniture. Greenwich Millennium Village operates a policy of continuous product development and all room layouts may be subject to minor modifications. Kitchen, bathroom and utility layouts are indicative only, are subject to change and may differ to build. Please speak to a Sales Consultant for more information and individual plot details. The floor plans provided are intended to only give a general indication of the proposed floor layout, are not drawn to scale and are not intended to form part of any offer, contract, warranty or representation. Please note that all apartments shown are leasehold properties and are subject to ground rents and service charges. To find out about any additional charges relating to these homes please visit: greenwichmillenniumvillage.com.



VIEW OF THE PODIUM GARDEN

4041 3 BEDROOM MAISONNETTE (UPPER)

LIVING ROOM
5.57M X 3.44M

PRINCIPAL BEDROOM
3.97M X 2.99M

BEDROOM 2
5.22M X 2.75M

BEDROOM 3
4.45M X 2.30M

TOTAL INTERNAL AREA
131.25SQM / 1411.25SQFT

TERRACE 2
5.97M X 1.80M

4042 3 BEDROOM MAISONNETTE (UPPER)

PRINCIPAL BEDROOM
4.40M X 3.26M

BEDROOM 2
4.97M X 2.84M

BEDROOM 3
2.99 X 2.84M

TOTAL INTERNAL AREA
115.55SQM / 1243.25SQFT

4043 3 BEDROOM MAISONNETTE (UPPER)

PRINCIPAL BEDROOM
4.40M X 3.26M

BEDROOM 2
4.97M X 2.84M

BEDROOM 3
2.98M X 2.84M

TOTAL INTERNAL AREA
115.55SQM / 1243.25SQFT

TERRACE 2
6.81M X 1.80M

4044 3 BEDROOM MAISONNETTE (UPPER)

LIVING ROOM
4.52M X 3.85M

PRINCIPAL BEDROOM
3.78M X 3.45M

BEDROOM 2
4.93M X 2.80M

BEDROOM 3
3.85M X 2.44M

TOTAL INTERNAL AREA
114.45SQM / 1231.45SQFT

TERRACE 2
8.40M X 1.80M

4045 3 BEDROOM APARTMENT

LIVING / DINING AREA
6.12M X 3.67M

KITCHEN
3.72M X 2.65M

PRINCIPAL BEDROOM
5.34M X 3.45M

BEDROOM 2
4.16M X 3.27M

BEDROOM 3
3.06M X 2.75M

TOTAL INTERNAL AREA
93.25SQM / 1003.25SQFT

BALCONY
5.40M X 1.80M

4046 3 BEDROOM APARTMENT

LIVING / DINING AREA
3.95M X 3.19M

KITCHEN
3.52M X 2.80M

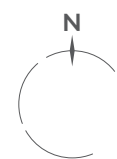
PRINCIPAL BEDROOM
5.56M X 2.99M

BEDROOM 2
5.15M X 3.16M

BEDROOM 3
4.45M X 2.20M

TOTAL INTERNAL AREA
92.55SQM / 995.75SQFT

TERRACE
6.21M X 1.80M



KEY:

- W - Wardrobe
- Cup'd - Cupboard
- Utility Cup'd - Utility Cupboard



All room sizes are approximate showing maximum dimensions which have been taken into the kitchen units. Dimensions stated are within a tolerance of +/- 5%. Total internal area measurements exclude outdoor areas. They are to finished measurements and are not intended for carpet sizes or items of furniture. Greenwich Millennium Village operates a policy of continuous product development and all room layouts may be subject to minor modifications. Kitchen, bathroom and utility layouts are indicative only, are subject to change and may differ to build. Please speak to a Sales Consultant for more information and individual plot details. The floor plans provided are intended to only give a general indication of the proposed floor layout, are not drawn to scale and are not intended to form part of any offer, contract, warranty or representation. Please note that all apartments shown are leasehold properties and are subject to ground rents and service charges. To find out about any additional charges relating to these homes please visit: greenwichmillenniumvillage.com.



← VIEWS OF THE PODIUM GARDEN

4047 2 BEDROOM APARTMENT

LIVING / DINING AREA
3.62M X 3.57M

KITCHEN
4.35M X 1.69M

PRINCIPAL BEDROOM
4.84M X 3.45M

BEDROOM 2
3.75M X 3.60M

TOTAL INTERNAL AREA
74.25SQM / 798.75QFT

TERRACE
5.08M X 1.81M

4048 2 BEDROOM APARTMENT

LIVING / DINING AREA
4.79M X 3.36M

KITCHEN
3.24M X 2.84M

PRINCIPAL BEDROOM
3.62M X 3.00M

BEDROOM 2
3.60M X 3.27M

TOTAL INTERNAL AREA
76.35SQM / 821.35QFT

BALCONY
4.00M X 1.80M

4049 3 BEDROOM APARTMENT

LIVING AREA
4.57M X 2.86M

DINING AREA
3.32M X 2.97M

KITCHEN
3.80M X 2.02M

PRINCIPAL BEDROOM
3.25M X 2.98M

BEDROOM 2
3.52M X 3.32M

BEDROOM 3
3.32M X 2.35M

TOTAL INTERNAL AREA
89.55SQM / 963.45QFT

TERRACE
3.18M X 2.82M

4050 2 BEDROOM APARTMENT

LIVING / DINING AREA
3.82M X 3.78M

KITCHEN
3.78M X 2.12M

PRINCIPAL BEDROOM
3.52M X 3.01M

BEDROOM 2
4.82M X 3.07M

TOTAL INTERNAL AREA
72.15SQM / 776.15QFT

TERRACE
4.02M X 2.06M

4051 2 BEDROOM APARTMENT

LIVING / DINING AREA
5.54M X 2.84M

KITCHEN
3.93M X 3.75M

PRINCIPAL BEDROOM
4.29M X 2.84M

BEDROOM 2
4.44M X 2.75M

TOTAL INTERNAL AREA
72.25SQM / 777.25QFT

BALCONY
4.00M X 1.79M

4052 2 BEDROOM APARTMENT

LIVING / DINING AREA
5.09M X 4.64M

KITCHEN
5.34M X 1.52M

PRINCIPAL BEDROOM
3.74M X 2.86M

BEDROOM 2
3.44M X 3.38M

TOTAL INTERNAL AREA
76QM / 818.15QFT

BALCONY
4.00M X 1.80M



KEY:

W - Wardrobe

Cup'd - Cupboard

Utility Cup'd - Utility Cupboard



All room sizes are approximate showing maximum dimensions which have been taken into the kitchen units. Dimensions stated are within a tolerance of +/- 5%. Total internal area measurements exclude outdoor areas. They are to finished measurements and are not intended for carpet sizes or items of furniture. Greenwich Millennium Village operates a policy of continuous product development and all room layouts may be subject to minor modifications. Kitchen, bathroom and utility layouts are indicative only, are subject to change and may differ to build. Please speak to a Sales Consultant for more information and individual plot details. The floor plans provided are intended to only give a general indication of the proposed floor layout, are not drawn to scale and are not intended to form part of any offer, contract, warranty or representation. Please note that all apartments shown are leasehold properties and are subject to ground rents and service charges. To find out about any additional charges relating to these homes please visit: greenwichmillenniumvillage.com.



← VIEWS OF THE PODIUM GARDEN

4053 2 BEDROOM APARTMENT

LIVING / DINING AREA
3.63M X 3.49M

KITCHEN
4.35M X 1.69M

PRINCIPAL BEDROOM
4.84M X 3.45M

BEDROOM 2
3.60M X 3.27M

TOTAL INTERNAL AREA
74.25SQM / 798.75QFT

TERRACE
4.94M X 1.81M

4054 2 BEDROOM APARTMENT

LIVING / DINING AREA
4.79M X 3.36M

KITCHEN
3.24M X 2.84M

PRINCIPAL BEDROOM
4.92M X 3.00M

BEDROOM 2
3.60M X 3.27M

TOTAL INTERNAL AREA
76.35SQM / 821.35QFT

BALCONY
4.00M X 1.80M

4055 3 BEDROOM APARTMENT

LIVING AREA
4.57M X 2.86M

DINING AREA
3.32M X 2.97M

KITCHEN
3.80M X 2.02M

PRINCIPAL BEDROOM
3.25M X 2.98M

BEDROOM 2
3.52M X 3.32M

BEDROOM 3
3.32M X 2.35M

TOTAL INTERNAL AREA
89.55SQM / 963.45QFT

TERRACE
3.02M X 2.72M

4056 2 BEDROOM APARTMENT

LIVING / DINING AREA
3.82M X 3.75M

KITCHEN
3.78M X 2.12M

PRINCIPAL BEDROOM
4.82M X 3.01M

BEDROOM 2
4.82M X 3.07M

TOTAL INTERNAL AREA
72.15SQM / 776.15QFT

TERRACE
4.02M X 2.06M

4057 2 BEDROOM APARTMENT

LIVING / DINING AREA
5.54M X 2.83M

KITCHEN
3.93M X 3.76M

PRINCIPAL BEDROOM
4.29M X 2.84M

BEDROOM 2
4.44M X 2.75M

TOTAL INTERNAL AREA
72.25SQM / 777.25QFT

BALCONY
4.00M X 1.79M

4058 2 BEDROOM APARTMENT

LIVING / DINING AREA
5.09M X 4.64M

KITCHEN
5.34M X 1.52M

PRINCIPAL BEDROOM
3.74M X 2.86M

BEDROOM 2
3.44M X 3.38M

TOTAL INTERNAL AREA
76QM / 818.15QFT

BALCONY
4.00M X 1.80M



KEY:

W - Wardrobe

Cup'd - Cupboard

Utility Cup'd - Utility Cupboard



All room sizes are approximate showing maximum dimensions which have been taken into the kitchen units. Dimensions stated are within a tolerance of +/- 5%. Total internal area measurements exclude outdoor areas. They are to finished measurements and are not intended for carpet sizes or items of furniture. Greenwich Millennium Village operates a policy of continuous product development and all room layouts may be subject to minor modifications. Kitchen, bathroom and utility layouts are indicative only, are subject to change and may differ to build. Please speak to a Sales Consultant for more information and individual plot details. The floor plans provided are intended to only give a general indication of the proposed floor layout, are not drawn to scale and are not intended to form part of any offer, contract, warranty or representation. Please note that all apartments shown are leasehold properties and are subject to ground rents and service charges. To find out about any additional charges relating to these homes please visit: greenwichmillenniumvillage.com.

Terrace opt6du



Image is computer generated. Elevations, architectural detailing and landscaping are indicative only and may vary from the illustrations. Image does not show future phases.



VIEW OF THE PODIUM GARDEN

4059 2 BEDROOM APARTMENT

LIVING / DINING AREA
3.63M X 3.49M

KITCHEN
4.35M X 1.69M

PRINCIPAL BEDROOM
4.84M X 3.45M

BEDROOM 2
3.60M X 3.26M

TOTAL INTERNAL AREA
74.25SQM / 798.75QFT

TERRACE
5.07M X 1.81M

4060 2 BEDROOM APARTMENT

LIVING / DINING AREA
4.79M X 3.36M

KITCHEN
3.24M X 2.84M

PRINCIPAL BEDROOM
4.92M X 3.00M

BEDROOM 2
3.60M X 3.27M

TOTAL INTERNAL AREA
76.35SQM / 821.35QFT

BALCONY
4.00M X 1.80M

4061 3 BEDROOM APARTMENT

LIVING AREA
4.57M X 2.86M

DINING AREA
3.32M X 2.97M

KITCHEN
3.80M X 2.02M

PRINCIPAL BEDROOM
4.58M X 3.25M

BEDROOM 2
3.52M X 3.32M

BEDROOM 3
3.32M X 2.35M

TOTAL INTERNAL AREA
89.55SQM / 963.45QFT

TERRACE
3.02M X 2.72M

4062 2 BEDROOM APARTMENT

LIVING / DINING AREA
3.82M X 3.75M

KITCHEN
3.78M X 2.12M

PRINCIPAL BEDROOM
4.82M X 3.01M

BEDROOM 2
4.82M X 3.07M

TOTAL INTERNAL AREA
72.15SQM / 776.15QFT

TERRACE
4.02M X 1.90M

4063 2 BEDROOM APARTMENT

LIVING / DINING AREA
5.54M X 2.83M

KITCHEN
3.93M X 3.75M

PRINCIPAL BEDROOM
4.29M X 2.84M

BEDROOM 2
4.44M X 2.75M

TOTAL INTERNAL AREA
72.25SQM / 777.25QFT

BALCONY
4.00M X 1.79M

4064 2 BEDROOM APARTMENT

LIVING / DINING AREA
5.09M X 4.64M

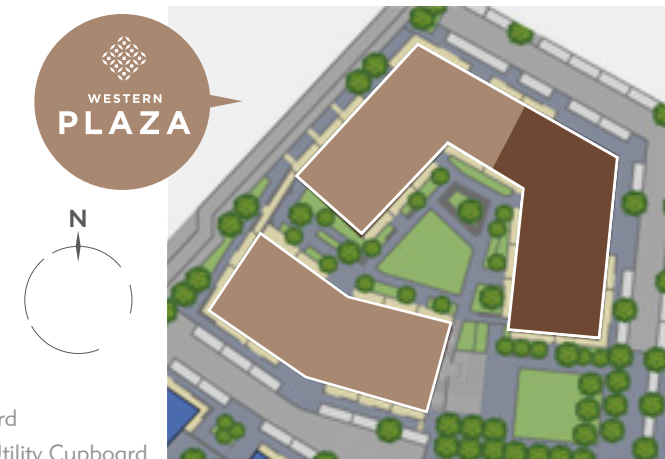
KITCHEN
5.34M X 1.52M

PRINCIPAL BEDROOM
3.74M X 2.86M

BEDROOM 2
3.44M X 3.38M

TOTAL INTERNAL AREA
76QM / 818.15QFT

BALCONY
4.00M X 1.80M



KEY:

W - Wardrobe

Cup'd - Cupboard

Utility Cup'd - Utility Cupboard

All room sizes are approximate showing maximum dimensions which have been taken into the kitchen units. Dimensions stated are within a tolerance of +/- 5%. Total internal area measurements exclude outdoor areas. They are to finished measurements and are not intended for carpet sizes or items of furniture. Greenwich Millennium Village operates a policy of continuous product development and all room layouts may be subject to minor modifications. Kitchen, bathroom and utility layouts are indicative only, are subject to change and may differ to build. Please speak to a Sales Consultant for more information and individual plot details. The floor plans provided are intended to only give a general indication of the proposed floor layout, are not drawn to scale and are not intended to form part of any offer, contract, warranty or representation. Please note that all apartments shown are leasehold properties and are subject to ground rents and service charges. To find out about any additional charges relating to these homes please visit: greenwichmillenniumvillage.com.



4065 2 BEDROOM APARTMENT

LIVING / DINING AREA
3.59M X 3.46M

KITCHEN
4.35M X 1.69M

PRINCIPAL BEDROOM
4.61M X 3.45M

BEDROOM 2
3.60M X 3.14M

TOTAL INTERNAL AREA
74SQM / 796.5SQFT

TERRACE
5.00M X 1.81M

4066 2 BEDROOM APARTMENT

LIVING / DINING AREA
4.79M X 3.36M

KITCHEN
3.24M X 2.84M

PRINCIPAL BEDROOM
4.92M X 3.00M

BEDROOM 2
3.60M X 3.27M

TOTAL INTERNAL AREA
76.3SQM / 821.3SQFT

BALCONY
4.00M X 1.80M

4067 3 BEDROOM APARTMENT

LIVING AREA
4.57M X 2.86M

DINING AREA
3.32M X 2.97M

KITCHEN
3.80M X 2.02M

PRINCIPAL BEDROOM
4.58M X 3.25M

BEDROOM 2
3.52M X 3.32M

BEDROOM 3
3.32M X 2.35M

TOTAL INTERNAL AREA
89.5SQM / 963.4SQFT

TERRACE
3.02M X 2.72M

4068 2 BEDROOM APARTMENT

LIVING / DINING AREA
3.82M X 3.78M

KITCHEN
3.78M X 2.12M

PRINCIPAL BEDROOM
4.82M X 3.01M

BEDROOM 2
4.82M X 3.07M

TOTAL INTERNAL AREA
72.1SQM / 776.1SQFT

TERRACE
4.02M X 1.90M

4069 2 BEDROOM APARTMENT

LIVING / DINING AREA
5.54M X 2.83M

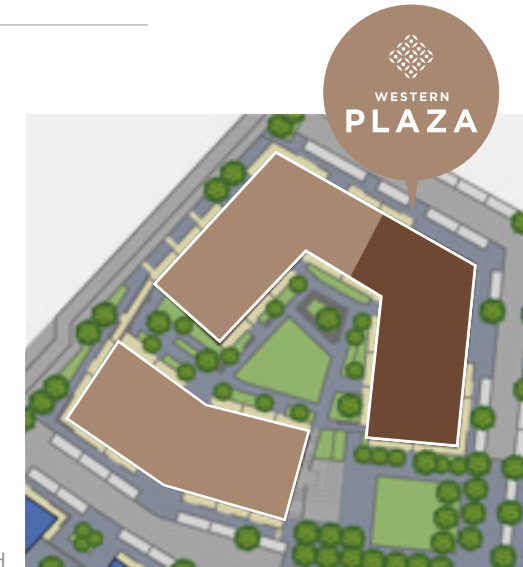
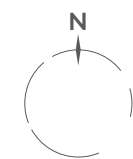
KITCHEN
3.93M X 3.76M

PRINCIPAL BEDROOM
4.29M X 2.84M

BEDROOM 2
4.44M X 2.75M

TOTAL INTERNAL AREA
72.2SQM / 777.2SQFT

BALCONY
4.00M X 1.79M



KEY:

W - Wardrobe

Cup'd - Cupboard

Utility Cup'd - Utility Cupboard

All room sizes are approximate showing maximum dimensions which have been taken into the kitchen units. Dimensions stated are within a tolerance of +/- 5%. Total internal area measurements exclude outdoor areas. They are to finished measurements and are not intended for carpet sizes or items of furniture. Greenwich Millennium Village operates a policy of continuous product development and all room layouts may be subject to minor modifications. Kitchen, bathroom and utility layouts are indicative only, are subject to change and may differ to build. Please speak to a Sales Consultant for more information and individual plot details. The floor plans provided are intended to only give a general indication of the proposed floor layout, are not drawn to scale and are not intended to form part of any offer, contract, warranty or representation. Please note that all apartments shown are leasehold properties and are subject to ground rents and service charges. To find out about any additional charges relating to these homes please visit: greenwichmillenniumvillage.com.



VIEW OF THE PODIUM GARDEN

4070 3 BEDROOM APARTMENT

LIVING / DINING AREA
4.98M X 4.42M

KITCHEN
3.79M X 2.12M

PRINCIPAL BEDROOM
3.59M X 2.75M

BEDROOM 2
3.55M X 3.27M

BEDROOM 3
3.78M X 2.39M

TOTAL INTERNAL AREA
86.25SQM / 927.95QFT

TERRACE
5.18M X 1.66M

4071 2 BEDROOM APARTMENT

LIVING / DINING AREA
4.72M X 2.97M

KITCHEN
3.14M X 2.80M

PRINCIPAL BEDROOM
3.97M X 3.25M

BEDROOM 2
3.68M X 3.14M

TOTAL INTERNAL AREA
67.35SQM / 724.45QFT

BALCONY
4.00M X 1.80M

4072 2 BEDROOM APARTMENT

LIVING / DINING AREA
5.61M X 3.24M

KITCHEN
4.49M X 1.73M

PRINCIPAL BEDROOM
3.65M X 3.60M

BEDROOM 2
4.49M X 3.17M

TOTAL INTERNAL AREA
82.65SQM / 889.15QFT

TERRACE
8.38M X 2.38M

4073 2 BEDROOM APARTMENT

LIVING / DINING AREA
5.05M X 2.73M

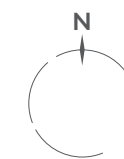
KITCHEN
5.93M X 1.55M

PRINCIPAL BEDROOM
4.68M X 4.48M

BEDROOM 2
3.85M X 3.14M

TOTAL INTERNAL AREA
81.95SQM / 881.65QFT

TERRACE
10.61M X 6.29M



KEY:

W - Wardrobe

Cup'd - Cupboard

Utility Cup'd - Utility Cupboard

All room sizes are approximate showing maximum dimensions which have been taken into the kitchen units. Dimensions stated are within a tolerance of +/- 5%. Total internal area measurements exclude outdoor areas. They are to finished measurements and are not intended for carpet sizes or items of furniture. Greenwich Millennium Village operates a policy of continuous product development and all room layouts may be subject to minor modifications. Kitchen, bathroom and utility layouts are indicative only, are subject to change and may differ to build. Please speak to a Sales Consultant for more information and individual plot details. The floor plans provided are intended to only give a general indication of the proposed floor layout, are not drawn to scale and are not intended to form part of any offer, contract, warranty or representation. Please note that all apartments shown are leasehold properties and are subject to ground rents and service charges. To find out about any additional charges relating to these homes please visit: greenwichmillenniumvillage.com.



VIEW OF THE PODIUM GARDEN

4074 3 BEDROOM APARTMENT

LIVING / DINING AREA
4.98M X 4.42M

KITCHEN
3.80M X 2.12M

PRINCIPAL BEDROOM
3.59M X 2.75M

BEDROOM 2
3.55M X 3.27M

BEDROOM 3
3.94M X 2.88M

TOTAL INTERNAL AREA
86.25SQM / 927.95QFT

TERRACE
4.85M X 1.66M

4077 2 BEDROOM APARTMENT

LIVING / DINING AREA
5.05M X 2.73M

KITCHEN
5.93M X 1.55M

PRINCIPAL BEDROOM
4.48M X 3.48M

BEDROOM 2
3.85M X 3.14M

TOTAL INTERNAL AREA
81.94SQM / 881.65QFT

TERRACE
3.63M X 2.30M

4075 2 BEDROOM APARTMENT

LIVING / DINING AREA
4.72M X 2.97M

KITCHEN
3.14M X 2.80M

PRINCIPAL BEDROOM
3.42M X 3.06M

BEDROOM 2
3.68M X 3.14M

TOTAL INTERNAL AREA
67.35SQM / 724.45QFT

BALCONY
4.00M X 1.80M

4076 2 BEDROOM APARTMENT

LIVING / DINING AREA
5.58M X 3.24M

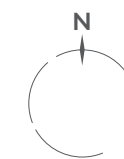
KITCHEN
4.49M X 1.73M

PRINCIPAL BEDROOM
3.65M X 3.60M

BEDROOM 2
4.49M X 3.17M

TOTAL INTERNAL AREA
82.65SQM / 889.15QFT

TERRACE
3.95M X 2.41M



KEY:

W - Wardrobe

Cup'd - Cupboard

Utility Cup'd - Utility Cupboard

All room sizes are approximate showing maximum dimensions which have been taken into the kitchen units. Dimensions stated are within a tolerance of +/- 5%. Total internal area measurements exclude outdoor areas. They are to finished measurements and are not intended for carpet sizes or items of furniture. Greenwich Millennium Village operates a policy of continuous product development and all room layouts may be subject to minor modifications. Kitchen, bathroom and utility layouts are indicative only, are subject to change and may differ to build. Please speak to a Sales Consultant for more information and individual plot details. The floor plans provided are intended to only give a general indication of the proposed floor layout, are not drawn to scale and are not intended to form part of any offer, contract, warranty or representation. Please note that all apartments shown are leasehold properties and are subject to ground rents and service charges. To find out about any additional charges relating to these homes please visit: greenwichmillenniumvillage.com.

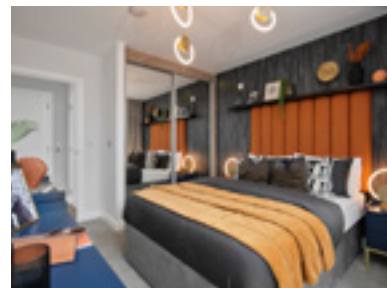
SPECIFICATION

KITCHEN

- Individually designed, contemporary-style kitchen
- Stone worktop with matching upstand
- Stone splashback behind hob
- Under-mounted sink with mixer tap
- Single multifunctional oven
- Induction hob with four rings and extractor hood (integrated extractor where hob is on breakfast bar)
- Integrated combination microwave
- Integrated dishwasher
- Integrated fridge/freezer
- Free-standing washer/dryer fitted within hall cupboard
- Integrated recycling bins provided
- Recessed downlighters

LIVING SPACES

- Recessed downlighters
- Lighting provided to outside space/balcony
- Pendant lighting in bedrooms
- Fitted wardrobe to principal bedrooms
- All homes designed to ensure good daylight to liveable spaces
- Underfloor heating to all homes



BATHROOM

- Contemporary white sanitaryware with chrome mixer taps
- Contemporary semi-recessed white hand basin
- Back to wall WC with soft-close seat
- Bath with tiled bath panel and screen
- Over bath shower head and shower handset with thermostatic mixer
- Mirrored, lit vanity unit with in built shaver socket
- Heated chrome towel rail
- Full-height tiling to the area around the bath. Half height tiling to all other sanitaryware walls
- Recessed downlighters

EN SUITE*

(WHERE APPLICABLE)

- Contemporary white sanitaryware with chrome mixer taps
- Contemporary semi-recessed white hand basin
- Back to wall WC with soft close seat
- Shower head and shower handset with thermostatic mixer and tray
- Sliding door to shower enclosure
- Mirror
- Heated chrome towel rail



- Full-height tiling to the area around the shower. Half height tiling to all other sanitaryware walls
- Shaver point
- Recessed downlighters

GENERAL FINISHES

- Entrance door with multipoint locking
- Chrome-finished door furniture on all internal doors
- Walls and ceilings painted in matt pure white
- All internal doors painted white with matching skirtings and architraves

FLOORING

- Porcelain floor tiling to bathroom and en suite (where applicable)
- Engineered timber flooring in hallways, living areas and kitchens
- Carpet to bedrooms

ELECTRICAL

- White plug sockets, some with USB ports (locations may vary)
- Low-energy light fittings throughout
- Pendant lighting to bedrooms
- Downlighters to living areas, bathrooms and en suites (where applicable)
- Underfloor heating to all homes
- Smoke alarms and heat detectors positioned where required throughout



HOME ENTERTAINMENT

- Fibre at Greenwich Millennium Village is currently by Open Fibre Network Limited (OFNL), who specialise in fibre to home broadband; the fastest type of connection in the UK. This network will provide voice, broadband and television to your new home. Please speak to a Sales Consultant for more information on residential service providers.
- Wiring for TV and SKY Q to each home (subscriptions required, please note that this MUST be done through the fibre supplier)

COMMUNAL AREAS

- Access to ground floor lobby area (property dependent)
- Access to communal roof terrace (property dependent)

- Lifts feature stainless steel mirrors and tiled floors to coordinate with the lobby
- Secure built-in letter boxes
- Secure entry system

SECURITY

- A vandal resistant audio visual door entry system provided within the hallway of each apartment, linked to main entrance doors (property dependent)
- Fob access control to all communal doors, stairs and lift
- The development complies with Secure By Design

ECO-CREDENTIALS

All homes have been rated as a Code Level 4 for Sustainable Homes. A range of passive and active energy management measures will be incorporated.

These will include a Mechanical Ventilation and Heat Recovery System, composite windows, high-performance glazing including triple glazing to some properties, high levels of thermal insulation and air tightness to improve the buildings' fabric efficiency.*

Energy display devices for electricity will be installed in each home, enabling purchasers to gain a better understanding of energy consumption and help reduce energy use. With all the homes designed to meet the Lifetime Homes criteria, low U-value building materials have been used, exterior low-energy light fittings used with daylight sensing, dedicated secure cycling spaces and electric vehicle charging points – the entire development is designed with environmental sustainability at the forefront.

Greenwich Millennium Village adheres to our 5 star commitment and the New Homes Quality Code for Home Builders. Copies of the New Homes Quality Code are available from the Marketing Suite and will also be provided upon reservation. For more information, please visit www.nhqb.org.uk.

*Please speak to a Sales Consultant for further details. These particulars should be treated as general guidance only and should not be relied upon as statements or representations of fact. We operate a policy of continual product development and individual features may vary. We recommend intending purchasers satisfy themselves, by personal inspection or otherwise, as to the correctness of these particulars. Greenwich Millennium Village Ltd reserves the right to amend specifications as necessary and may vary from that shown.



COMMITTED TO OUR CUSTOMERS



THE TEAMS ARE WORKING TO ACHIEVE ONE COMMON GOAL: TO ENSURE THAT YOU ARE SATISFIED AND HAPPY WITH YOUR NEW GREENWICH MILLENNIUM VILLAGE HOME FROM THE MOMENT THAT YOU MAKE YOUR RESERVATION, TO THE DAY YOU MOVE IN AND BEYOND.

No matter whom you are dealing with, or what queries, questions or complaints you may have, you can be confident that our people and procedures will adhere to our 5 star commitment and the New Homes Quality Code for Home Builders.

Copies of the 'New Homes Quality Code' are available from our sales offices and via our website; a copy (also identifying where further guidance can be found) will always be provided to you upon reservation.

Our customer service begins at the outset, with our trained Sales Consultants who offer guidance on the legal process involved in buying a home and help with arranging mortgage finance through independent financial consultants.

Every home at Greenwich Millennium Village carries our commitment to quality and improvement. All of our homes are protected by a 10 year warranty New Homes warranty from Premier Guarantee.

A New Homes Warranty provides you with protection against structural faults, or 'defects', which could occur in the structure of your new home. These include faults in your walls, floors, roof or foundations. These faults can be extremely expensive to fix so having adequate insurance protection in place is hugely important.

The policy is made up of 2 elements:

1. For the first 2 years of owning a new home, the customer has the benefit of a Builder Warranty, during this time should a defect occur to the new home caused by faulty workmanship or materials, Greenwich Millennium Village will aim to put it right.
2. From year 3 to 10, the Premier Guarantee cover is applied. The policy documents given to customers relating to their home provides full of the insurance policy.

Further information can be found at www.premierguarantee.co.uk/homeowners

Further information on the Code, which gives protection and rights to purchasers of new homes, can be found at www.nhqb.org.uk



Replacing a previous owner's idea of 'interior design' can be a costly and time-consuming process. On the other hand, move into a brand new home at Greenwich Millennium Village and you have the perfect blank canvas to make your home your own.

Buy a new home at Greenwich Millennium Village and there'll be no nasty surprises or extra maintenance costs waiting for you, plus you'll have the peace of mind of a 10 year Premier Guarantee. Buy a second-hand home and who knows what you could be faced with.

We create eco-friendly and sustainable homes in the best locations. Our outstanding range of new homes are designed for modern living with lower environmental impact and running costs and low maintenance. These provide compelling reasons to choose a new home at Greenwich Millennium Village.



COUNTRYSIDE
Homes

AN AWARD WINNING TEAM

COUNTRYSIDE HOMES IS PART OF **VISTRY GROUP**, THE UK'S LEADING PROVIDER OF AFFORDABLE MIXED TENURE HOMES.



AURA • CAMBRIDGE

All Countryside Homes developments carry a signature style and character, designed for the way people live today with materials that reflect a total commitment to quality.

Their exacting standards and sustainable credentials combine to create places that will stand the test of time.

They also hold the 5 Star rating from the Home Builders Federation, recognising the highest build quality standards, as well as clear commitment to customer service.

From the character of the homes built to the planning of environments and the unique detailing of the landscape, Countryside Home's approach to place making results in places where people feel at home, providing a greater sense of belonging, community spirit and quality of life for everyone who lives in and around their developments.



BEAULIEU GATE • CHELMSFORD



Taylor Wimpey

TAYLOR WIMPEY LONDON IS PART OF ONE OF THE LARGEST RESIDENTIAL DEVELOPERS IN THE UK, THE FTSE 100-LISTED TAYLOR WIMPEY PLC.

The specialist division takes a bespoke approach to create distinctive, high-quality properties and places in London locations that truly stand out from the crowd.

While every development in the portfolio is unique, all share the same ideals of expert design, high-quality craftsmanship, practicality and investment security. And all come with the guarantee of excellent customer service.

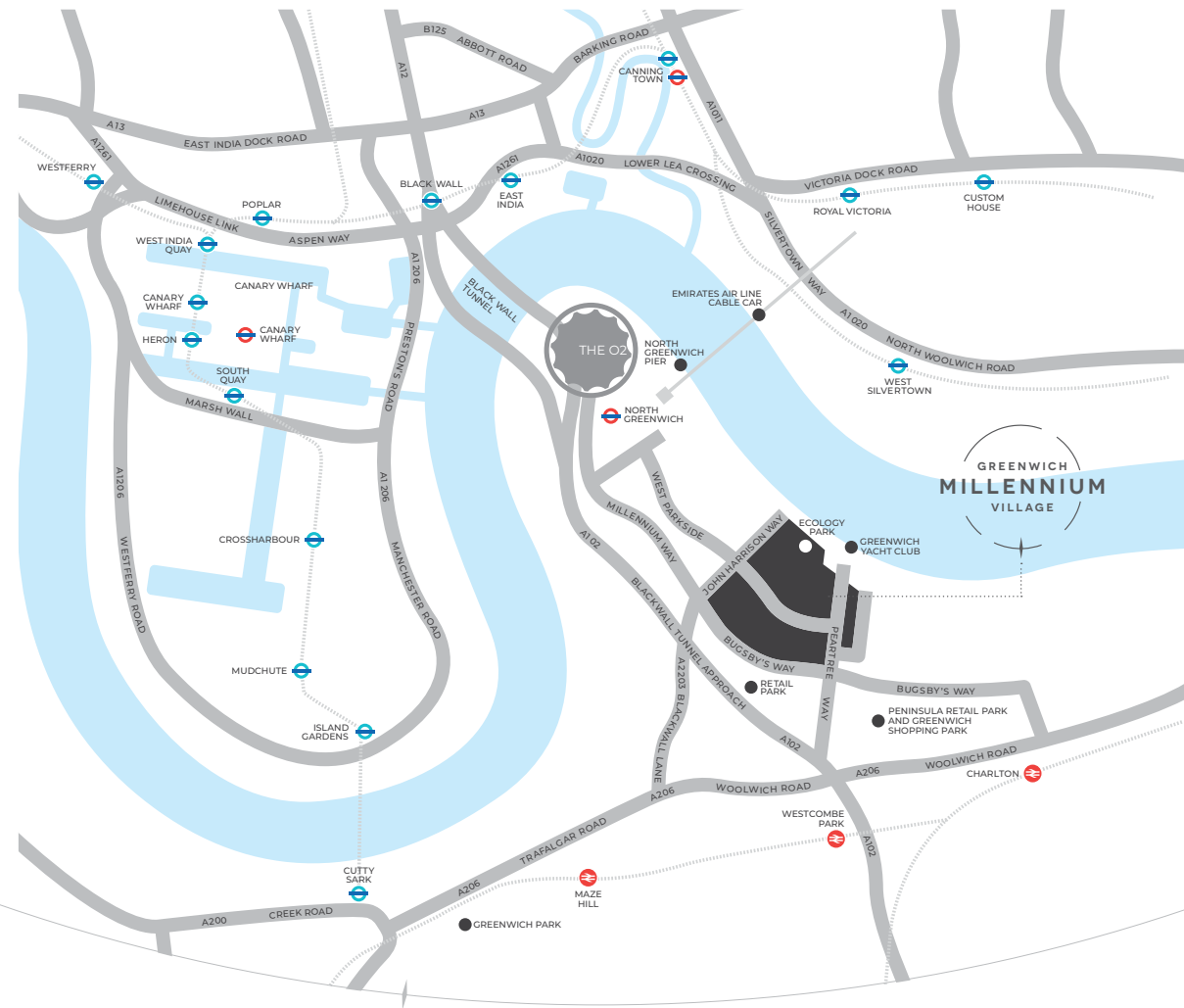
SUPPORTED BY MAYOR OF LONDON

THE HOUSING AND LAND DIRECTORATE IS RESPONSIBLE FOR THE MAYOR'S PLANS TO DELIVER NEW AND IMPROVED HOMES AND STRONG COMMUNITIES.

Working closely with boroughs and partners, we manage the Mayor's housing investment programmes and land and property assets to support the building of affordable homes, job creation and regeneration.



THE DENIZEN • CITY OF LONDON EC1



HOW TO FIND US

BY RAIL:

North Greenwich station, on the Jubilee Line, is 0.7 miles from Greenwich Millennium Village. Exit the station and, at the roundabout, take the first exit onto Edmund Halley Way. Turn right onto West Parkside. After half a mile, turn left for Greenwich Millennium Village and follow signs to the Marketing Suite.

BY CAR:

The best approach from the south is via the A102, which connects to the A2 Rochester Way Relief Road, linking to the M2, the M25 and the M20. From the north, use the Blackwall Tunnel from the East India Dock Road.

BY FERRY:

The Thames Clippers ferry serves North Greenwich Pier. Head west from the pier towards the O2. After 0.1 miles, turn left, with the O2 on your right-hand side. After 0.2 miles, take a sharp left. Turn left again, then right towards Edmund Halley Way. Turn right again and, at the roundabout take the first exit onto Edmund Halley Way. Turn right onto West Parkside. After half a mile, turn left for Greenwich Millennium Village and follow signs to the Marketing Suite.

BY CABLE CAR:

The Emirates Air Line is 0.7 miles from Greenwich Millennium Village. Depart on East Parkside. Turn left onto West Parkside. After half a mile, turn left for Greenwich Millennium Village and follow signs to the Marketing Suite.

**WESTERN PLAZA.
OFF WEST PARKSIDE,
GREENWICH,
LONDON,
SE10 0WG**

CALL
020 8023 8040

VISIT
GREENWICHMILLENNIUMVILLAGE.CO.UK

**MARKETING
SUITE
OPEN DAILY
10AM TO 5PM**

Greenwich Millennium Village Ltd is a collaboration between Countryside Homes (part of Vistry Group) and Taylor Wimpey Developments Ltd. The site is being developed by Greenwich Millennium Village Ltd in association with Mayor of London.

The particulars outlined in this brochure should be treated as general guidance only and should not be relied upon as statements or representations of fact. We operate a policy of continual product development and individual features may vary. We recommend intending purchasers satisfy themselves, by personal inspection or otherwise, as to the correctness of these particulars. Greenwich Millennium Village Ltd reserves the right to amend specifications as necessary. Some photography is from previous developments. Some images are computer generated and may be subject to change.

All room sizes are approximate showing maximum dimensions which have been taken into the kitchen units. Dimensions stated are within a tolerance of +/- 5%. Total internal area measurement excludes outdoor areas. They are to finished measurements and are not intended for carpet sizes or items of furniture. Do not use these measurements for carpet sizes, appliance spaces or items of furniture. The floor plans provided are intended to only give a general indication of the proposed floor layout, are not drawn to scale and are not intended to form part of any offer, contract, warranty or representation. They must not be relied upon as a statement or representation of fact. Kitchen, bathroom and utility layouts are indicative only, are subject to change and may differ to build. Specific plot sizes and layouts may vary within the same unit type. Window sizes may vary. Greenwich Millennium Village operates a policy of continuous product development and all room layouts may be subject to minor modifications. Please speak to a Sales Consultant for more information and individual plot details. Please note, delivery of block is subject to build phasing and as such some facilities may not be available at point of exchange, including but not exclusively to, recreational facilities, internal parking, external amenity spaces and resident's concierge.

Please note that all apartments shown are leasehold properties and are subject to ground rents and service charges. To find out about any additional charges relating to these homes please visit: greenwichmillenniumvillage.co.uk



WESTERN
PLAZA

Taylor
Wimpey

SUPPORTED BY
MAYOR OF LONDON


COUNTRYSIDE
Homes